

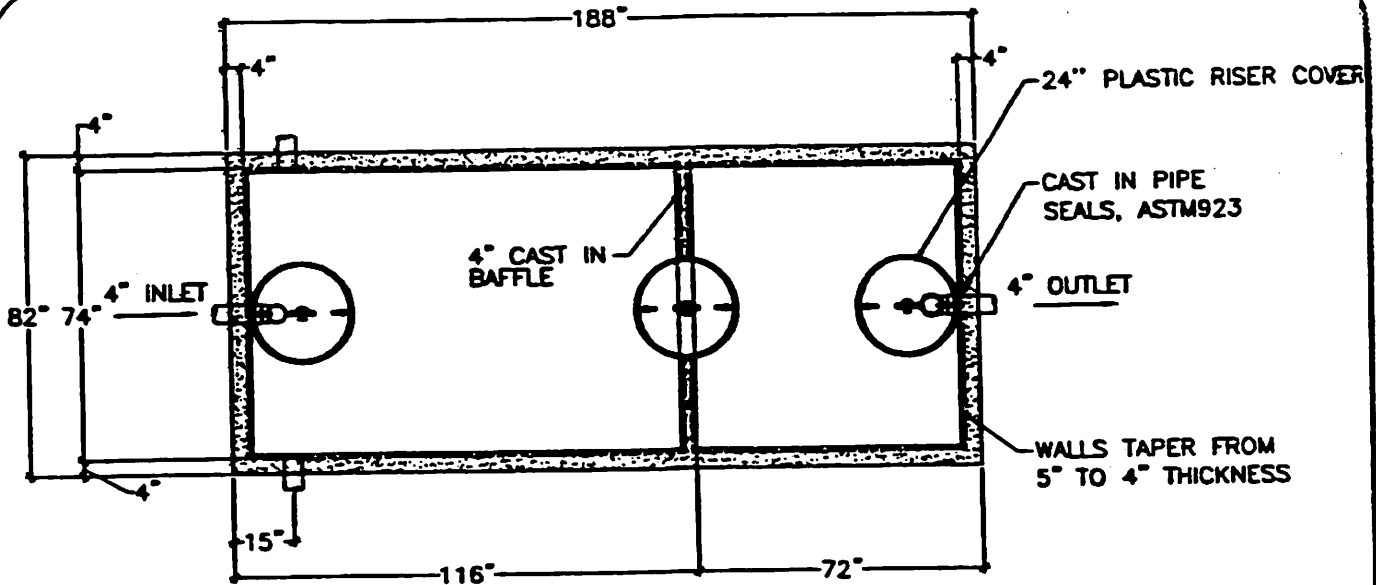


Precast Concrete & Accessories

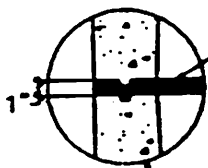
58 Prospect Street, Auburn, N.Y. 13021

315 252 7214 1 800 479 6335

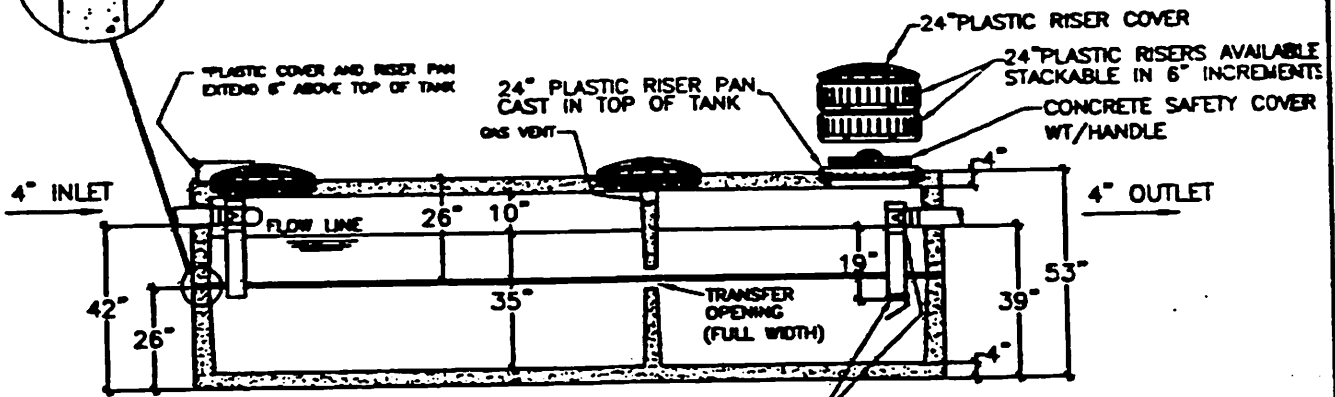
Fax 315 252 7859



PLAN VIEW



CONSEAL CS-102 SEALER BETWEEN JOINT DETAIL, ADDS APPROXIMATELY AN INCH TO OVERALL HEIGHT (DIMENSIONS REFLECT THIS ADDITION).



SECTION VIEW

NOTES:

- MATERIALS AND MANUFACTURING PER ASTM C1227
- CONCRETE STRENGTH $f'c = 5000$ PSI MIN.
- MAXIMUM LIVE LOAD AT SURFACE = 300psf
- MAXIMUM BURIAL DEPTH = 1.5'
- CONCRETE CONTAINS FIBRE MESH MEETING ASTM C1116 AT A RATE OF 4 lbs/cy
- JOINTS ARE SEALED WITH BUTYL MASTIC

2000 GAL - SEPTIC TANK

DRAWN BY: LWK

FILE NAME:
ST-2000 NCOV

DATE:
5/5/04

SCALE:
1/4" = 1' 0"

SHEET:
ST-11