



# Precast Concrete & Accessories

58 Prospect Street, Auburn, N.Y. 13021

315 252 7214 1 800 479 6335

Fax 315 252 7859

**SPECIFICATIONS:**

MEETS OR EXCEEDS 5000 PSI CONCRETE (MEETS ASTM 890)

AIR ENTRAINMENT RANGE 4.5 to 7.5%

H-20 LOADING

**WEIGHT:**

2" WITH 24" OPENING= 138LBS.(.06 TON)

2" WITH 30" OPENING= 94LBS.(.04 TON)

3" WITH 24" OPENING= 207LBS.(.09 TON)

3" WITH 30" OPENING= 141LBS.(.06 TON)

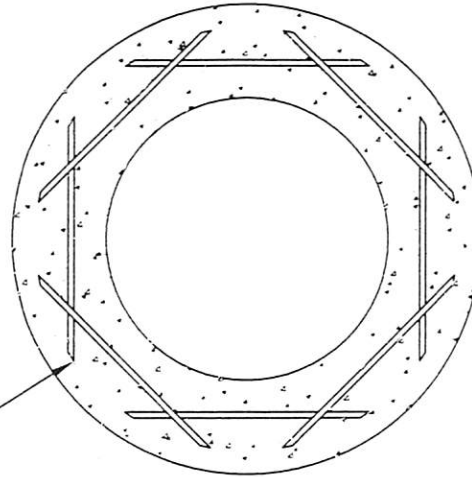
4" WITH 24" OPENING= 275LBS.(.14 TON)

4" WITH 30" OPENING= 188LBS.(.09 TON)

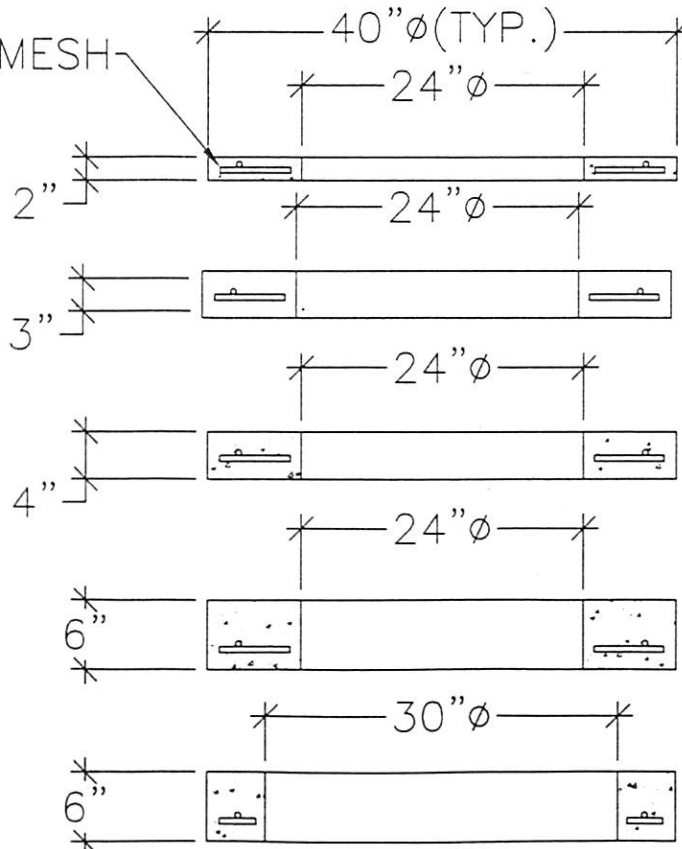
6" WITH 24" OPENING= 413LBS.(.20 TON)

6" WITH 30" OPENING= 282LBS.(.14 TON)

#4 REBAR  
GRADE 60 STEEL  
IN 4",6" RINGS



4"X4" WIRE MESH



## GRADE RINGS 2" or 3" or 4" or 6"

DRAWN BY: ADP

FILE NAME:  
GRADE RINGS

DATE:  
10/14/02

SCALE:  
3/8= 1' 0"

SHEET:  
GR-1