

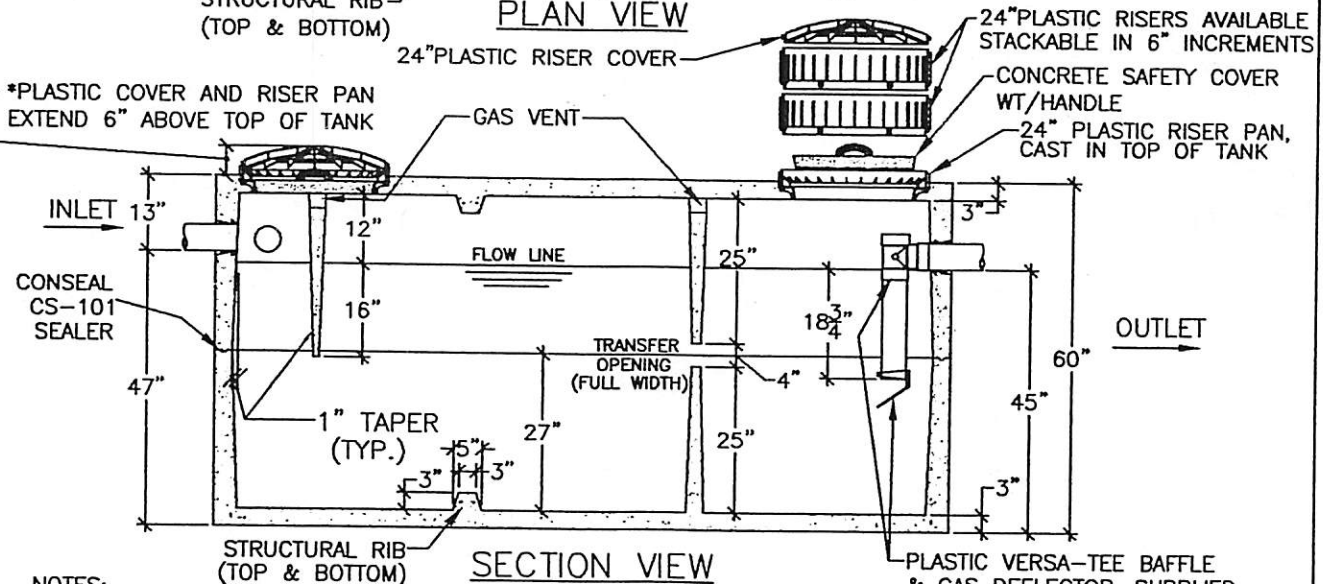
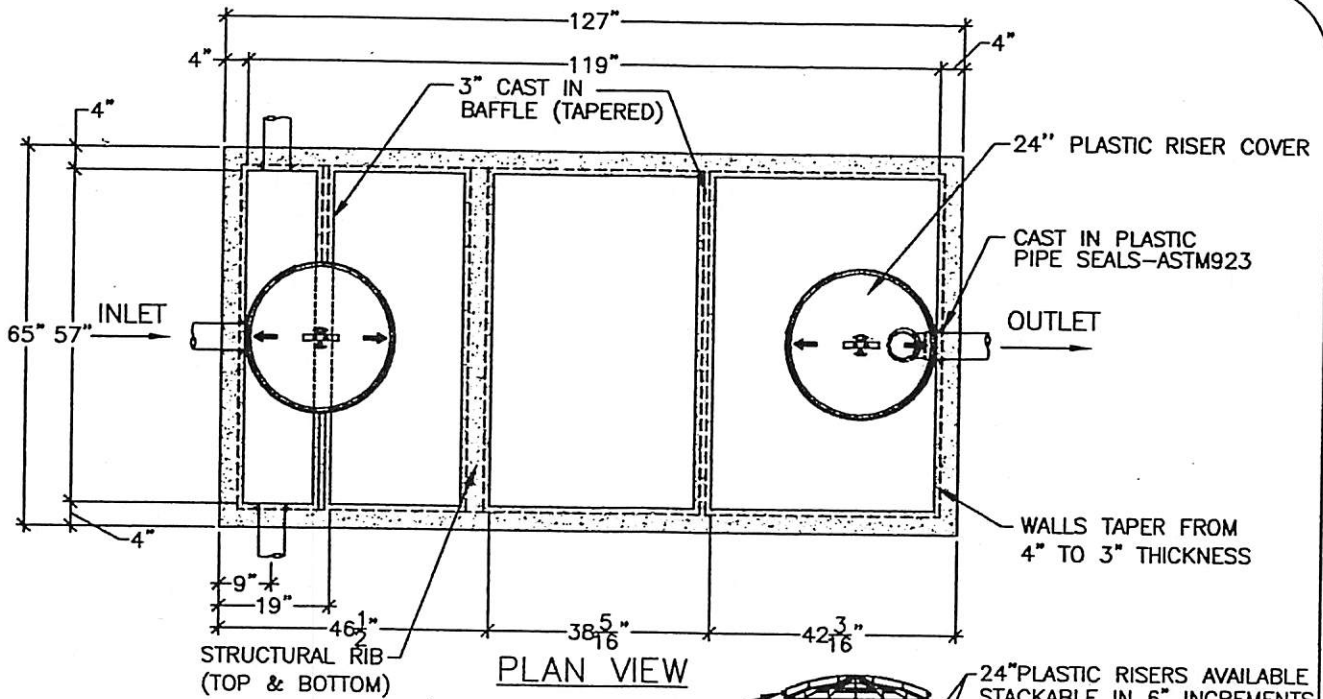


Precast Concrete & Accessories

58 Prospect Street, Auburn, N.Y. 13021

315 252 7214 1 800 479 6335

Fax 315 252 7859



NOTES:

- MATERIALS AND MANUFACTURING PER ASTM C1227
- CONCRETE STRENGTH $f'c = 5000$ PSI MIN.
- MAXIMUM LIVE LOAD AT SURFACE = 300psf
- MAXIMUM BURIAL DEPTH = 1.5'
- WEIGHT OF ASSEMBLED TANK: 13,000 LBS [6.5TON]
- TANK CAPACITY AT FLOW LINE = 1251 GALLONS
- 29.36 GALS PER INCH OF RISE
- CONCRETE CONTAINS FIBRE MESH MEETING ASTM C1116 AT A RATE OF 4 lbs/cy
- JOINTS ARE SEALED WITH BUTYL MASTIC

1250 GAL - SEPTIC TANK

DRAWN BY: LWK

FILE NAME:
ST-1250 NCOV

DATE:
7/7/04

SCALE:
3/8" = 1' 0"

SHEET:
ST-7