



Precast Concrete & Accessories

58 Prospect Street, Auburn, N.Y. 13021

315 252 7214 1 800 479 6335

Fax 315 252 7859

SPECIFICATIONS:

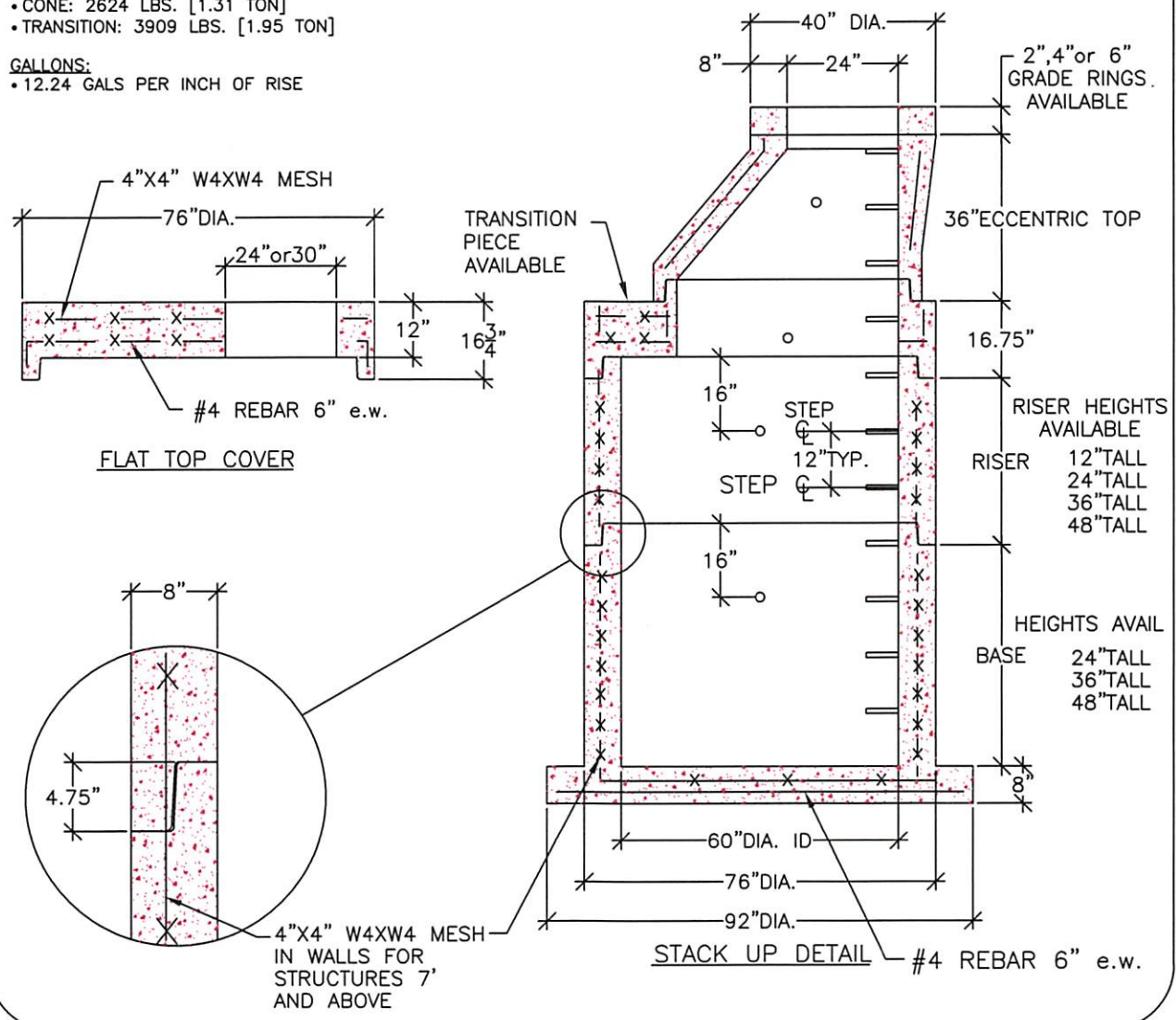
- 5000 PSI CONCRETE MEETS ASTM C-890
- REINFORCEMENT STEEL GRADE 60 MEETS ASTM A-615
- BUTYL ROPE SEALANT
- POLYPROPYLENE STEPS MEET ASTM A-478-94
- MEETS ASTM C 478
- H-20 LOADING

WEIGHT:

- PER FOOT OF RISE: 1414 LBS. [.7 TON]
- BASE: 3848 LBS. [1.9 TON]
- COVER: 2841 LBS. [1.4 TON]
- CONE: 2624 LBS. [1.31 TON]
- TRANSITION: 3909 LBS. [1.95 TON]

GALLONS:

- 12.24 GALS PER INCH OF RISE



60" MANHOLE

DRAWN BY: LWK	FILE NAME: MH-60	DATE: 3/19/02	SCALE: 3/8"=1'0"	SHEET: MH-4
---------------	---------------------	------------------	---------------------	----------------