



Precast Concrete & Accessories

58 Prospect Street, Auburn, N.Y. 13021

315 252 7214 1 800 479 6335

Fax 315 252 7859

SPECIFICATIONS:

MIN. 5000 PSI CONCRETE MEETS ASTM C-890

STEEL MEETS ASTM C-615

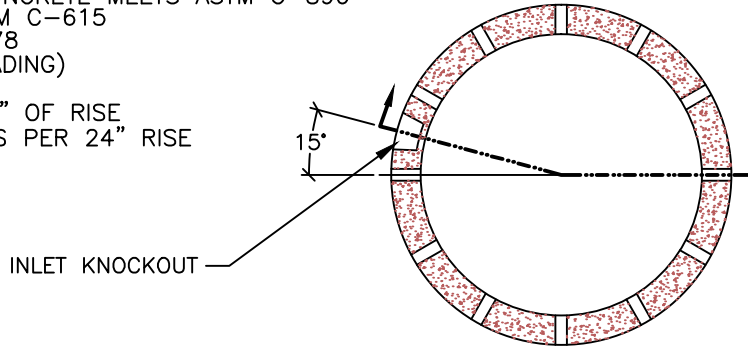
MEETS ASTM C 478

TRAFFIC (H2O LOADING)

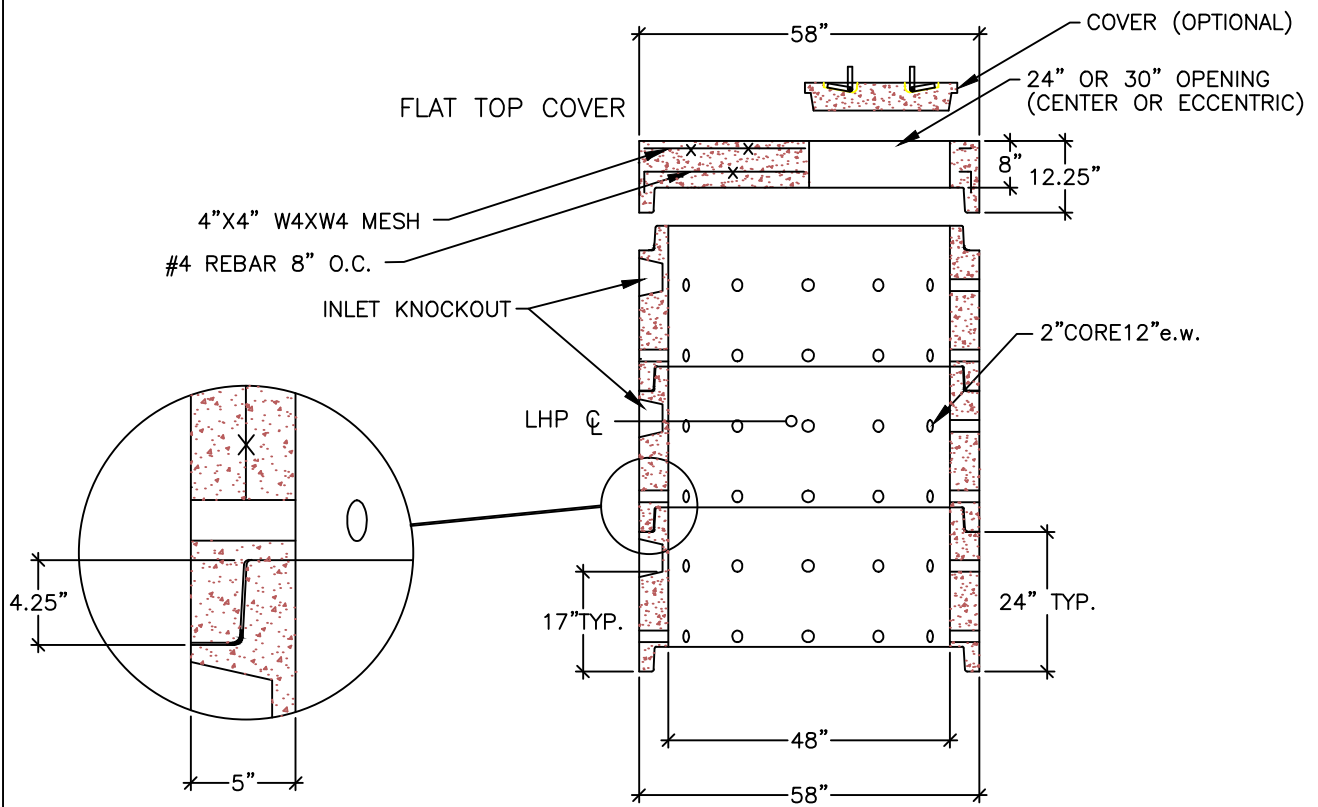
25% SEAPAGE

188 GAL. PER 24" OF RISE

WEIGHT: 1710 LBS PER 24" RISE



PLAN VIEW



SECTION VIEW

48" I.D. DRYWELL

DRAWN BY: LWK

FILE NAME:
DW-48MH

DATE:
10/15/02

SCALE:
3/8= 1' 0"

SHEET:
DW-4