



Precast Concrete & Accessories

58 Prospect Street, Auburn, N.Y. 13021

315 252 7214 1 800 479 6335

Fax 315 252 7859

SPECIFICATIONS:

REINFORCEMENT STEEL GRADE 60 MEETS ASTM A-615

5000 PSI CONCRETE MEETS ASTM C-890

MEETS ASTM C 478

H-20 LOADING

WEIGHT:

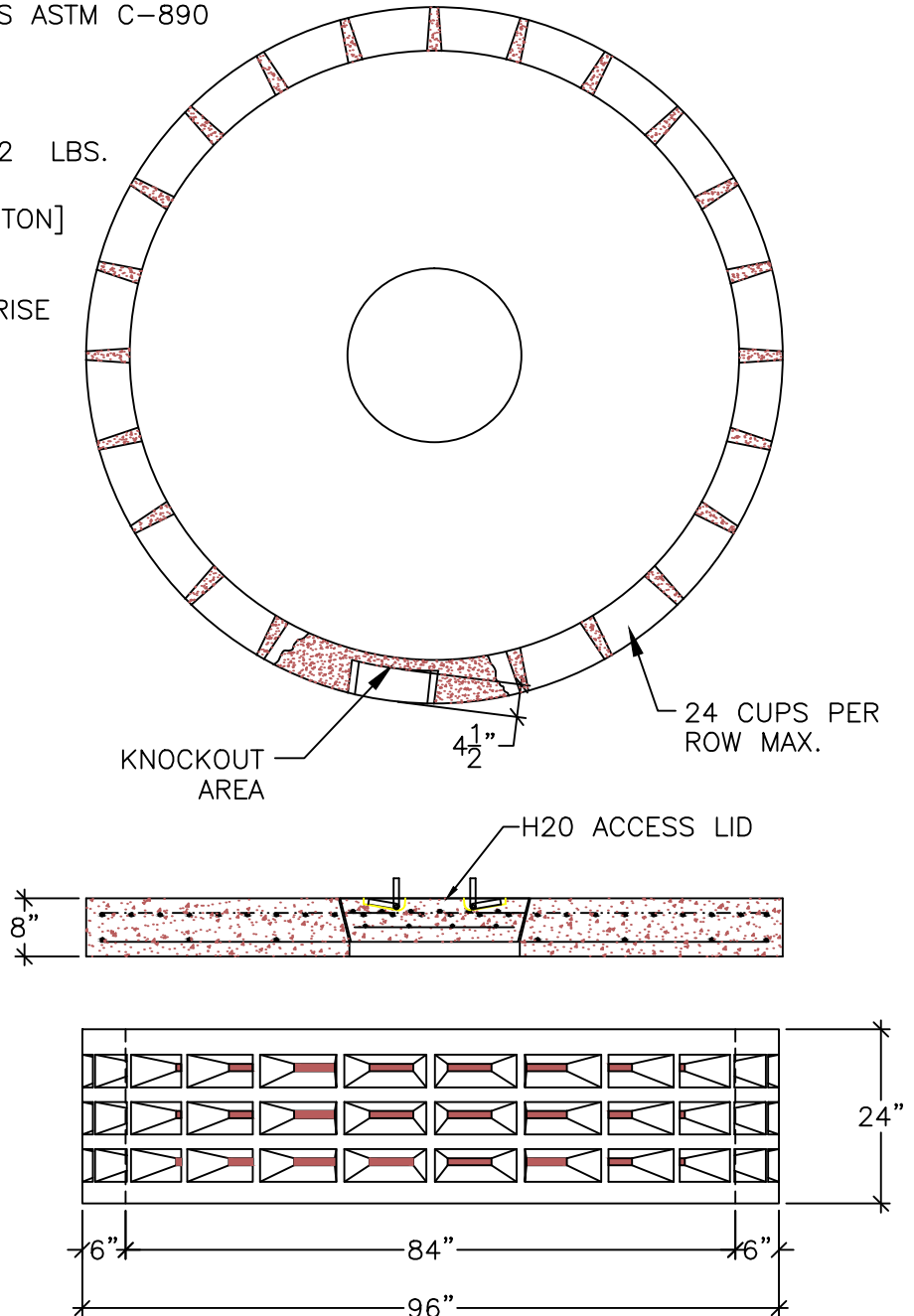
• PER FOOT OF RISE: 1742 LBS.

[.87 TON]

• COVER: 4956 LBS. [2.4 TON]

GALLONS:

• 24 GALS PER INCH OF RISE



500 GALLON DRYWELL

DRAWN BY: LWK

FILE NAME:
DW 500

DATE:
4/21/04

SCALE:
3/8 = 1' 0"

SHEET:
DW- 7